

**A 100% Solids Epoxy Medium Duty Aggregate Broadcast Flooring System**

**DESCRIPTION:**

The CHEM-ROCK Broadcast Flooring System, or “CHEM-ROCK BC System” is a solid color, aggregate reinforced, 100% solids epoxy flooring system that can be installed in standard layered applications ranging from 1/16” – 3/16” or greater thickness. The finished flooring system is very durable, impact resistant, uniformly textured and able to withstand heavy traffic and industrial use.

**RECOMMENDED USES:**

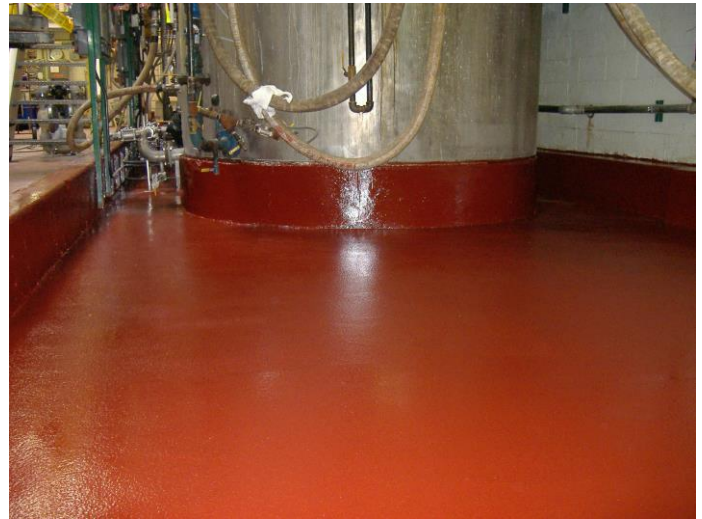
The CHEM-ROCK Broadcast System is specified for use as a high performance flooring system in areas that are subjected to medium to heavy rolling traffic, wet areas that require uniform anti-slip texture, food processing and industrial / manufacturing areas requiring good compressive strength and impact resistance as well as excellent cleanability.

**SYSTEM FEATURES:**

- 100% solids and VOC Compliant
- Range of Texture Options – from light aggregate finishes to extremely aggressive finishes
- USDA / FDA Accepted
- Good Chemical Resistance
- Good Abrasion Resistance
- Good Impact Resistance
- Excellent Inter-coat Cohesion
- 18 Solid Colors plus “Natural”
- Easy to Clean and Maintain
- Gloss Finish is Standard
- Easy Mixing Ratios and Application Steps

**BASIC SYSTEM INSTALLATION STEPS:**

1. Prepare substrate according to ROCK-TRED’s Surface Preparation Guide. A minimum surface profile of CSP-2 is recommended.
2. Perform any necessary substrate patching using approved ROCK-TRED materials.



3. Apply appropriate clear primer for job site conditions. Recommended ROCK-TRED primers for this system include CHEM-ROCK WB, ROCK-PRIME HB, ROCK-PRIME DP, POXI-ROCK Primer or CHEM-ROCK Primer. Install at manufacturer’s recommended coverage rates.
4. After primer is sufficiently cured, apply broadcast “seed” coat using pigmented ECO-POXI or CHEM-ROCK LV or MV or CHEM-ROCK LT-45 at approximately 125-150 square feet per gallon. Immediately broadcast ROCK-TRED approved aggregate to rejection in the desired mesh size for appropriate texture. Approximate coverage for aggregate media will be ½ pound per square foot per full broadcast layer.
5. After seed coat is sufficiently cured sweep excess aggregate off using a clean bristle broom and discard aggregate.
6. Apply pigmented locking finish coat (or subsequent seed coat if more than 1 lift is specified) using CHEM-ROCK LV or MV. Approximate coverage rate for subsequent seed or top coats applied over a full broadcast of aggregate range from 65-80 square feet per gallon over exposed PCA322 (35/50 mesh broadcast aggregate) down to 35-45 square feet per gallon over 20 mesh aggregates. Multiple topcoats may be required for a uniform appearance over larger aggregates such as 20 mesh blends.

# CHEM-ROCK BROADCAST SYSTEM DATA SHEET

- Repeat steps 4-6 to increase system thickness by 1/16" per each additional full broadcast.

## **SYSTEM COMPONENT PRODUCTS:**

- Primer: CHEM-ROCK WB, ROCK-PRIME HB, ROCK-PRIME DP, CHEM-ROCK PRIMER or POXI-ROCK PRIMER
- CHEM-ROCK LV, MV, LT-45 or ECO-POXI for broadcast coats.
- CHEM-ROCK LV or MV for topcoats.
- ROCK-TRED aggregate in correct mesh size to produce desired finish texture.
- ROCK-TRED Universal Colorant.

## **OPTIONAL SYSTEM COMPONENT PRODUCTS:**

- Apply additional finish coats from the CHEM-THANE Series for added abrasion resistance, or if a Satin or Matte finish is desired
- Pre-patching to non-moving joints, cracks, spalls or eroded areas of concrete can be completed using ROCK-TRED's Poxi-Rock Flooring Mortar, Crack N Patch Kits or RQP rapid set patching compound.
- If the concrete substrate is less than 5 years old, or there is evidence of minor movement along the control joints, control joints through the CHEM-ROCK Broadcast System should be installed. After cutting, the joints can be filled with ROCK-TRED's ELASTI-POXI JOINT FILL for color matched permanently flexible sealed joints.

## **FOR BEST RESULTS:**

- Recommended for Interior Use Only.
- New Concrete must cure for at least 28 days @ 70°F and have an effective moisture vapor barrier in place.
- DO NOT thin the polymer products.
- DO NOT apply when humidity exceeds 70% indoors.
- DO NOT allow material to puddle during application.
- Allow each coat to dry tack-free or clear before recoating.

- Apply each coat within 24 hours of previous coat.
- DO NOT apply to structurally unsound surfaces.
- Remove all surface oil and/or grease
- Mix full kits of resin/hardener only. Kit components are pre-measured for optimal performance. Catalyzation errors due to mis-mixing in the field voids product warranty.

## **SURFACE PREPARATION:**

The substrate must be clean, dry and sound with new concrete cured for at least 28 days at 70°F. Remove dust, laitance, grease, curing compounds, waxes, foreign particles, disintegrated or soft base materials, and any previously applied potentially incompatible coatings. Create a surface profile on the substrate by either steel shot blasting or diamond grinding to a minimum CSP-2 profile. For additional floor preparation information refer to ROCK-TRED'S Surface Preparation Guide.

**Review ROCK-TRED'S Safety Data Sheets (SDS), labels and individual technical data sheets for the component products prior to mixing and applying.**

## **ADDITIONAL REFERENCE MATERIAL:**

CHEM-ROCK Laminated System AIA Specification  
Component Tech Data Sheets  
Component Material Safety Data Sheets  
ROCK-TRED's Surface Preparation Guide  
ROCK-TRED's Floor Maintenance Instructions

## **MAINTENANCE:**

For optimal floor appearance and performance following installation, refer to ROCK-TRED's Floor Maintenance Instructions.

## **CUSTOMER NOTE:**

For information on application situations not covered above, contact your local ROCK-TRED representative or the corporate office at 888-ROCK-TRED.

---

### **WARRANTY STATEMENT:**

Information about ROCK-TRED products is given to the best of our knowledge, based on tests and experience. Such information supplied about our products is not a representation or a warranty. It is supplied on the condition that you will make your own tests to determine the suitability of the product for your particular purpose. As products are often applied or used under conditions beyond our control, ROCK-TRED cannot guarantee anything but the quality of its products. ROCK-TRED warrants that its products meet the specifications set forth by ROCK-TRED, but we reserve the right to change any given specification without prior notice. ROCK-TRED DISCLAIMS ALL WARRANTIES RELATING TO THE PRODUCTS AND THEIR APPLICATION, EXPRESS OR IMPLIED, INCLUDING BUT NOT LIMITED TO THE IMPLIED WARRANTIES OF MERCHANTABILITY AND FITNESS FOR A PARTICULAR PURPOSE. Receipt of ROCK-TRED products constitutes acceptance of the terms of this limited warranty and the terms and the conditions set out in our invoice, contrary provisions of buyer's purchase documents notwithstanding. Upon receipt of merchandise, purchaser has 30 days to notify ROCK-TRED in writing that materials are defective. In the event ROCK-TRED finds that the product delivered is off specification, ROCK-TRED will, at its sole discretion, either replace the product or refund the purchase price thereof, and ROCK-TRED's choice of one of these remedies is the buyer's sole remedy. In no event shall the liability of ROCK-TRED exceed the purchase price of shipped merchandise. Claims must be in writing. Claims after 30 days are void. ROCK-TRED will under no circumstances be liable for special, incidental or consequential damages. This warranty supercedes all other guaranties, whether oral or written, and whether expressed, implied or statutory. No representative is authorized to make any representation or warranty or assume any other liability on our behalf with any sale of our products. Certain products may contain chemicals which may cause serious physical injury. Before using, please read the Material Safety Data Sheet and follow all precautions to prevent bodily harm.

---